

Mechanical Heater



ATHP-HW1

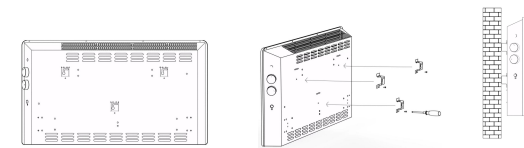
Convactor Heater -ATHP-HW1 series

- 1. heat settings;
- 2. Metal panel;
- 3. Wire heating element, fast heating, long lifespan, no light, flavourless;
- 4. Adjustable thermostat and overheat protection;
- 5. With indicator light switch;
- 6. Wall mounted and standing;



- Ultra Thin Design
- Overheat Safety Protection
- Large R Angle Design
- Wall Mounted

Dimensions



Warranty & Approvals

Approvals	CE, GS, UKCA, EPR, ROHS
Warranty	1 Year



Dimensions

Model	ATHP-HW05	ATHP-HW10	ATHP-HW15	ATHP-HW20	ATHP-HW25
Power (w)	500	1000	1500	2000	2500
Long(mm)	335	475	615	755	895
Width(mm)	80	80	80	80	80
High(mm)	420	420	420	420	420
Weight(kg)	3.7	3.7	4.7	5.7	6.7
Packaging details					
Long(mm)	515	515	655	795	935
Width(mm)	125	125	125	125	125
High(mm)	465	465	465	465	465
Weight(kg)	4.4	4.4	5.5	6.6	7.7
loading(40 HQ)	2300	2300	1800	1500	1250

AntTec Group Co,Ltd

Technical Details

Controls	Mechanical
Construction	Durable epoxy-polyester powder coated metal casing with grille
Heating element	Heating wire Fast heating,long lifespan,flavourless
Installation	Wall bracket for easy fixing
Safety	Thermal cut-out. Overheat detection
IP Rating	IP20
Supply	1/N/PE ~220-240V,50/60Hz Class I, with earth wire
Power cord	Exposed 1.5m ,PVC power line
Colour	White

